



The Voter

April 2016

The League of Women Voters of Tacoma—Pierce County

Phone: (253) 272-1495 Email: lwvtacomapierce@gmail.com Web: www.tacomapiercelwv.org

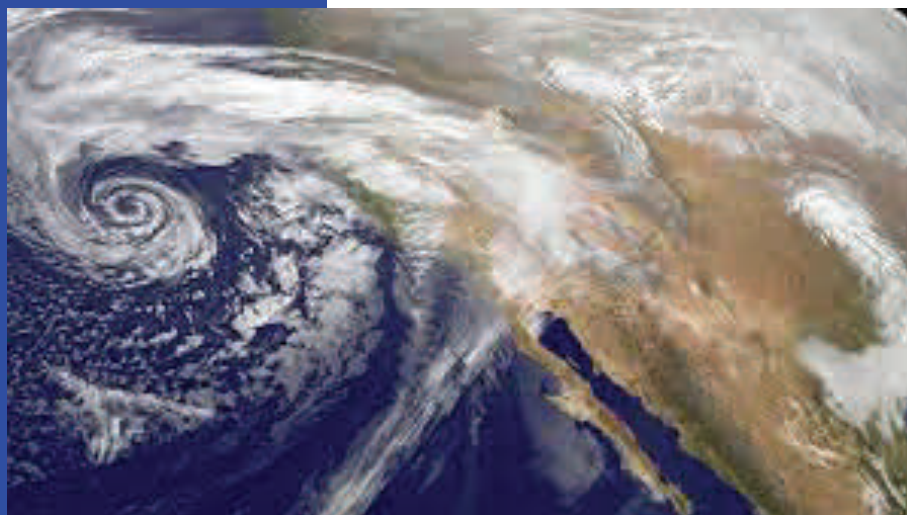
In This Issue

	Page
April Unit Meetings-Climate Change	1
President’s Message	2
Highlights of March Board Meeting	2
University Place Park Forum	3
Voter Resources	3
Fabric Art Show & Sale	4
Unit Meetings	5

April Unit Meetings - Climate Change

Although climate change is a global issue, the LWVWA Climate Change Committee believes that we can address these issues most effectively by concentrating on impacts in the Northwest and in Washington State. We'd like your help identifying local impacts you're most concerned about! During the April unit meetings, Marianne Seifert will facilitate conversations about:

⇒ Which impacts are you most concerned about: human health, community infrastructure (including housing and transportation), water quality and quantity, agriculture, energy generation and distribution, tourism and recreation, coastal communities and ecosystems, cultural problems, or other impacts?



⇒ What are some opportunities for our communities to reduce these impacts and provide solutions? What are some co-benefits from these solutions?

The unit meeting conversations and others around the state will inform which impacts and actions the LWVWA Climate Change Committee will emphasize in our toolkit.

Calendar	6
Board Roster	7
Membership Form	7

LWVWA: <http://www.lwvwa.org/>
LWVUS: <http://www.lwv.org/>

The League of Women Voters of Tacoma-Pierce County is a nonpartisan political organization that encourages informed and active participation in government, works to increase understanding of major public policy issues, and influences public policy through education and advocacy

If you can't make it to the April unit meetings, please email your thoughts to lwvtacomapierce@gmail.com by April 10.

If you'd like to learn more, here are links to two publications that focus on climate change in the state of Washington, with executive summaries and more in-depth information:

Preparing for a Changing Climate, Washington State’s Integrated Climate Response Strategy, April 2012, Pub No. 12-01-004, Washington Department of Ecology

The State of Knowledge: Climate Change in Puget Sound Executive Summary, Climate Impacts Group, College of the Environment, University of Washington, Nov. 2015.



President's Message

I heard great reports from the unit meetings on the Mental Health study consensus. Your participation is what makes the League effective. The board is discussing how best to distribute the study. You will find more information in the pages of The Voter.

The fundraising committee has met and will be making plans to increase revenues in addition to asking our members to contribute. Many of you have been most generous which is much appreciated. If you have an idea for an activity or strategy for fundraising that you are interested in helping us carry out, please let a board member know.

A special thanks to the Voter Registration and Voter Services Committees who are doing wonderful work in our communities. As always, we are anxious to hear from you about our work.

With much appreciation for all of you— *Ruth Ann Hatchett*

Check out our web site: www.tacomapiercelwv.org

Highlights of March Board Meeting

LWVT-PC gained two members in February. Susan Eidschink reported income at \$325, expenditures, at \$524.42 with a balance of \$5,249.84. The Treasurer's report will be filed for audit.

The State Board needs replacements to fill two MLD leadership positions. State Council will meet in Vancouver on June 3-5, with the main focus on Climate Change and Voter Issues. The draft State Strategic plan should be ready next month.

John Thurlow shared the proposed 2016-17 LWVT-PC budget. With a few changes, and another appearance before the Board, it will be presented at the Annual meeting for approval.

Guidelines for use of the office were presented by Cheryl Mann and Susan Eidschink. It was decided to integrate the proposal with a current policy and present it to members at the Annual meeting.

Cynthia Stewart presented the status of the Education Fund and asked for comments on the spending of funds for the publication of the Pierce County Mental Health study as well as future forums and studies. Discussion took place. Cynthia will bring back suggested changes to the April meeting.

The following was passed or agreed upon: We would partner with the Washington State Retired Teachers Association on a "meet and greet" event with candidates on October 20; LWVT-PC representatives would support the LWV of Kentucky on their proposal to the National League for a new study for a League Position on Fair Lobbying Practices; LWVT-PC representatives to the National Convention will be Cheryl Mann and Lyz Kurnitz-Thurlow .

Upcoming events: Mental Health Forum-May 19; University Place Park Commission Forum-April 14; Lyz Kurnitz-Thurlow's fabric art sale in support of the League - April 30, 31, May 1; Annual meeting, June 11 at the First United Methodist Church with speaker Julie Anderson, Pierce County Auditor.

Paula Eismann, Secretary

Visit us on Facebook at

www.facebook.com/pages/League-of-Women-Voters-of-Tacoma-Pierce-County/312747775413



Forum on Proposed University Place Metro Park District

By Lyz Kurnitz-Thurlow, Co-Chair Voter Service

The League of Women Voters of Tacoma-Pierce County will be sponsoring an information and candidates' forum on the proposed University Place Metropolitan Park District and the candidates who are running for the five positions the Board will have, if the proposition is passed.

**Monday, April 11
6:30 to 8:00 pm
University Place Council Chambers
3715 Bridgeport Way West
University Place
Recorded and televised by Pierce County TV**

The program will be moderated by Lyz Kurnitz-Thurlow of the League. She will review the background on why this is now an issue. A proponent of the proposed park district will be allowed five minutes to present their case, followed by an opponent of the proposal who will be given equal time. Written questions will be submitted by the audience, and the two sides will each have one minute to respond.

During the candidates' forum, all candidates running for the 5 seats on the Park Board (if it passes) will give two-minute opening statements. All candidates will have equal time to respond to written questions from the audience and the moderator. Candidates will be given the opportunity to make one-minute closing statements.

The League wishes to thank all who have contributed to the organization of the program. A special thanks goes to Linda Seesz, City of University Place, who is making this possible.



Voter Confusion—Resources Available

Your're already aware of VOTE411.org.



However, it doesn't clarify the questions many voters have here in Washington State.

Although both parties' caucuses have already happened now, there is still confusion among voters about the relationship of those to the presidential primary. In response to that, LWVWA has produced some have new information online . Please use this and pass the information around within your communities. Take a look [here](#).

FABRIC ART SHOW & SALE

KIMONOS

and WALL HANGINGS

(embellished, beaded, embroidered)

by Lyz and Jewel



Friday, April 29, 5-7 p.m.

Saturday, April 30, Noon-5 p.m.

Sunday, May 1, Noon-5 p.m.

at

League of Women Voters of Tacoma-Pierce County

621 Tacoma Avenue S., Tacoma 98402

(First Tower ground floor)

For more information:

Lyz Kurnitz-Thurlow - lyzkurnitz@harboret.com (FB Lyz Kurnitz-Thurlow/Lyz and Jewel, fabric arts)

A portion of the proceeds will benefit the League of Women Voters of Tacoma-Pierce County Education Fund.

Get Involved! Attend a Unit Meeting and Bring a Friend (or two)

Tacoma

2nd Thursday of the Month

1:00—3:00 pm

North Tacoma Police Station

5140 N. 26th St.

Tacoma

Contact: Lyz Kurnitz-Thurlow,

lyzkurnitz@harbornet.com

Southwest Pierce

2nd Friday of the Month

10:00 am to noon

Steilacoom Community Center

2301 Worthington St.

Steilacoom

Contact: Ann Elliston, 253-564-4102

East Pierce

2nd Saturday of the Month

10:00 am to Noon

Puyallup Library

324 S. Meridian

Puyallup

Contact: Ellen Zulauf,

eazul@comcast.net

Gig Harbor-Key Peninsula

2nd Saturday of the Month

2:00—4:00 pm

Harbor History Museum

4121 Harborview Dr.

Gig Harbor

Contact: Sharon Peace-Doane, 253-

265-0841

This Month: April – Climate Change input to LWVWA toolkit

Although climate change is a global issue, the LWVWA Climate Change Committee wants help from local League members in identifying local impacts we are most concerned about! During our April unit meetings, Marianne Seifert will facilitate conversations about impacts that concern us and opportunities for solutions.

Next Month: May – Unit Choice

The May Unit meeting topics will be chosen by each Unit. The unit choice topics are listed in the calendar.

Last Month: March – Pierce County Mental Health Study Consensus

At the March Unit meetings attendees participated in discussion dealing with the mental health study and came to consensus on aspects of this issue in Pierce County. Currently there is no position on mental health in Pierce County, so this exercise works toward a position upon which we **are able to act**.

Keeping up with League of Women Voters of Tacoma-Pierce County

For those of you who are not on Facebook, look for LWVT-PC online posts at The Suburban Times, thesubtimes.com, and Patch, patch.com. Both of these news sites have become easy to use. For Patch, select your desired community (Find your Patch) and scroll among the latest Bulletin Board posts.

For more information, see www.tacomapiercelwv.org or call 253-272-1495

LWVT-PC Calendar February—May 2016

April 8 10:00 am—Noon	Southwest Pierce Unit Meeting Climate Change Steilacoom Community Center 2301 Worthington St., Steilacoom	May 12 1:00—3:00 pm	Tacoma Unit Meeting Unit Choice: Methanol Plant North Tacoma Police Station 5140 N. 26th St., Tacoma
April 9 10:00 am—Noon	East Pierce Unit Meeting Climate Change Puyallup Library 324 S. Meridian, Puyallup	May 13 10:00 am—Noon	Southwest Pierce Unit Meeting Unit Choice: Speaker from Western State Hospital Steilacoom Community Center 2301 Worthington St., Steilacoom
April 9 2:00—4:00 pm	Gig Harbor Unit Meeting Climate Change Harbor History Museum 4121 Harborview Dr., Gig Harbor	May 14 10:00 am—Noon	East Pierce Unit Meeting Unit Choice: 2016 Legislative Session Update Puyallup Library 324 S. Meridian, Puyallup
April 11 6:30—8:00 pm	University Place Metropolitan Park District Election Forum University Place City Council Cham- bers 3715 Bridgeport Way West Unviersity Place	May 14 2:00—4:00 pm	Gig Harbor Unit Meeting Unit Choice: TBD Harbor History Museum 4121 Harborview Dr., Gig Harbor
April 14 1:00—3:00 pm	Tacoma Unit Meeting Climate Change North Tacoma Police Station 5140 N. 26th St., Tacoma	May 19 7:00—9:00 pm	Mental Health Forum First United Methodist Church 621 Tacoma Ave. S. Tacoma
April 20	Deadline for May Voter articles	May 24 10:00 am—Noon	LWVT-PC Board Meeting, 621 Tacoma Ave. S., Ste. 202 Tacoma
April 26 10:00 am—Noon	LWVT-PC Board Meeting, 621 Tacoma Ave. S., Ste. 202 Tacoma	June 11 10:00 am—1:30 pm	LWVT-PC Annual Meeting 621 Tacoma Ave. S. Tacoma
April 30—May 1 See poster for times	Lyz Kurnitz-Thurlow Fabric Art Show & Sale 621 Tacoma Ave. S., Ste. 202 Tacoma	June 20	Deadline for Summer Voter
May 11 9:00 am-3:00 pm	Project Homeless Connect Puyallup Fair Grounds Help register voters Contact Susan Eidenschink, susanei- den@harbornet.com, for location		

Voter Production & Distribution Volun- teers

Your Voter is brought to you by the following people:

Editorial Volunteers:

Cynthia Stewart
Susan Eidenschink
Julie Offner

Publicity:

Lucinda Wingard

LWVTPC Board Members

President	Ruth Ann Hatchett	253-864-7556 ; ruthann6257@msn.com
1st Vice President	Lyz Kurnitz-Thurlow	253-924-0288; lyzkurnitz@harbornet.com
2nd Vice President	Julie Offner	253-432-4407; offner.julie@gmail.com
Secretary	Paula Eismann	253-863-8845, peismann60@comcast.net
Treasurer	Susan Eidenschink	253-365-4005; susaneiden@harbornet.com
Directors:	Ingrid Curtis	253-862-7865; Ltcolrwc@comcast.net
	Cheryl Mann	252-851-6266; Larch@gci.net
	Sharon Peace-Doane	253-265-0841; hrdoanes@comcast.net
	Julio Quan	253-238-9161; julioquan1@gmail.com
	Cynthia Stewart	360-413-1210; stewdahl@comcast.net
	John Thurlow	253-219-1617; johnthurlow@harbornet.com
	Ann Williams	253-759-3355; willar12000@yahoo.com

Join the Tacoma—Pierce County League of Women Voters !

The League of Women Voters of Tacoma – Pierce County invites you to join us!

Any citizen of voting age, male or female may become a member.

Yes, I'd like to become a Member of the League of Women Voters of Tacoma-Pierce County.

This application also entitles me to full membership in and mailings of the Washington State and National League of Women Voters (LWVWA and LWVUS)

Membership for one year for an individual is \$75 (for two members of a household - \$112.50). Student membership is \$37.50. If you are not a citizen and/or 18 years of age, you may become an Associate Member for \$37.50.

There are also special memberships that will help League even more and will be given special recognition: LWV Suffragist, \$500.00; LWV Advocate, \$250.00; and LWV Supporter, \$150.00.

Please indicate the type of membership you desire. We have scholarship memberships available at this time. Membership dues are NOT tax deductible. Contributions to the Education Fund (*by separate check made out to the Education Fund of LWVT-PC, and they are tax deductible*) and/or the General Fund are welcome.

Name _____ Phone _____ Email _____

Address _____ City _____ State _____ Zip _____

Type of Membership: _____ Comments: _____

Mail to: League of Women Voters of Tacoma-Pierce County, 621 Tacoma Avenue South, Tacoma, WA 98402-2301